

NEW

## FL – GKM – 9402 – 120 – 1R

### Model Prefix

R – Reducer  
 F – C-face or B-face Adapter  
 H – Hand Wheel  
 L – Limit Switch  
 E – Encoder  
 J – Rotary Counter  
 G – Base Model

### Screw End & Configuration

T – Threaded End  
 C – Clevis End  
 M – Top Plate  
 P – Plain End  
  
 K – Keyed Screw  
 CC – Double Clevis  
  
 D – Inverted Rotating  
 U – Upright Rotating

### Series & Capacity No.

**Series:**  
 50kN - 200kN  
 Anti-backlash (94xx)  
 Special AB (104xx)

25kN  
 Anti-backlash (9002)  
 Special AB (10002)

**Capacities:**  
 50kN - 200kN:  
 Upright model suffixes end with the capacity number.  
 Inverted model suffixes lower the capacity number by one digit.  
 Rotating model suffixes raise the capacity number by one digit.

25kN:  
 Upright model suffix ends as shown.  
 Inverted model suffix lower the capacity number by one digit.  
 Rotating model suffixes raise the capacity number by one digit.

### Travel

1mm increment travels are always represented using the exact travel amount.

Serialized digits in this position may also be used for other models containing special features.

### Model Suffix

B – Boot  
 L – Single End Worm Ext. Left  
 R – Single End Worm Ext. Right  
 1 – Optional Ratio #1  
 2 – Optional Ratio #2  
 X – Supplied without cover pipe, but with guide bushing.

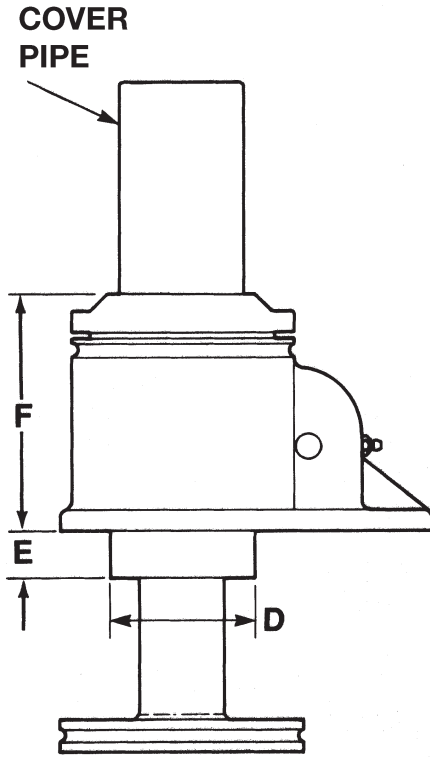
## Metric Anti-backlash Actuator Performance Specifications

Capacity (kN)		25	50	100	150	200
Lifting Screw	Diameter (mm)	30	38	52	58	65
	Lead (mm)	6	9	12	12	12
	Type	Metric Trapezoidal	Metric Trapezoidal	Metric Trapezoidal	Metric Trapezoidal	Metric Trapezoidal
Worm Gear Ratios	Std.	6:1	6:1	8:1	8:1	8:1
	Optional No. 1	24:1	24:1	24:1	24:1	24:1
	Optional No. 2	12:1	12:1	—	—	—
Travel per Worm Turn (mm)	Std.	1.000	1.500	1.500	1.500	1.500
	Optional No. 1	0.250	0.375	0.500	0.500	0.500
	Optional No. 2	0.500	0.750	—	—	—
Worm Torque at No Load (N-m)	Std.	0.56	1.13	2.26	2.26	3.39
	Optional No. 1	0.56	1.13	2.26	2.26	3.39
	Optional No. 2	0.56	1.13	—	—	—
Maximum Input Power (kW)	Std.	1.49	2.98	3.73	3.73	3.73
	Optional No. 1	0.37	0.56	1.12	1.12	1.12
	Optional No. 2	0.56	1.49	—	—	—
Worm Torque at Full Load (N-m)	Std.	23.26	62.46	128.80	208.08	302.99
	Optional No. 1	10.79	29.77	69.49	111.55	162.47
	Optional No. 2	14.80	40.31	—	—	—
Efficiency Rating (%)	Std.	17.1	19.1	18.5	17.2	15.8
	Optional No. 1	9.2	10.0	11.5	10.7	9.8
	Optional No. 2	13.4	14.8	—	—	—
Weight with 25mm Stroke (kg)		8.2	16.8	24.9	31.8	45.8
Wt per Additional 25mm Stroke (kg)		0.13	0.40	0.63	0.67	1.16
Key Torque (N-m)		80.72	213.37	579.94	943.98	1374.01
Max Worm Speed at Full Load (rpm)	Std.	612	456	277	171	118
	Optional No. 1	327	180	154	96	66
	Optional No. 2	361	353	—	—	—
Max Load at Max Power and 1750 rpm (kN)	Std.	8.34	12.34	14.30	13.19	11.32
	Optional No. 1	3.56	3.36	5.73	5.29	3.42
	Optional No. 2	4.38	8.93	—	—	—

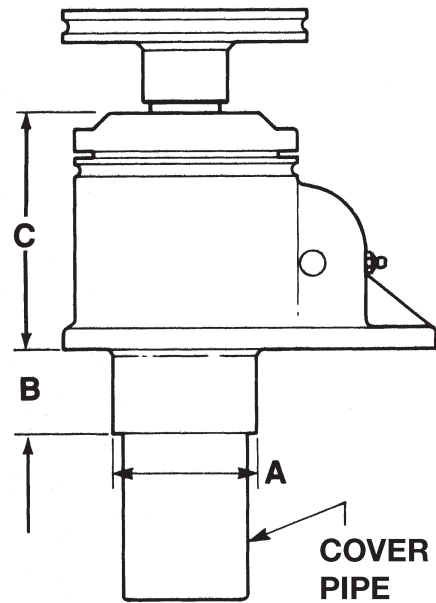
\* -For loads from 25% to 100% of actuator capacity, torque requirements are approximately proportional to the load. Raises, measured in increments of 25 mm, are available up to 6.1 meters, depending on lifting screw diameter and available bar stock length.  
**Note: Contact Customer Service for motorized performance.**

**Key Adaptor Dimensions for Metric Anti-backlash Actuators**

**Keyed Anti-Backlash Inverted**



**Keyed Anti-Backlash Upright**



Actuator Capacity (kN)	Upright Actuators			Inverted Actuators		
	A Dia (mm)	B (mm)	C (mm)	D Dia (mm)	E (mm)	F (mm)
5	42.0	Pipe Length	64.0	31.8	20.6	73.0
10	42.0	Pipe Length	97.5	31.8	9.5	85.9
20	57.2	31.8	98.5	31.8	20.6	98.5
50	69.8	44.5	138.0	69.8	22.4	138.0
100	85.9	50.8	146.0	85.9	28.7	146.0
150	92.2	50.8	156.0	92.2	31.8	156.0
200	101.6	38.1	197.0	101.6	25.4	197.0